



Companion Guide

ASC X12N 278 (005010X216) Health Care Services Review Notification and Acknowledgment 278

**Version 1.0
September 15, 2020**

Preface

The Cigna Companion Guide supplements the HIPAA ASC X12N 278 (005010X216) Implementation Guide for Health Care Services Review Notification and Acknowledgment.

Disclosure Statement

The information provided here is for reference use only, and does not constitute the rendering of legal, financial, or any other professional advice or recommendations by Cigna. Cigna makes no representation or warranties of any kind in connection with the information provided herein, and hereby disclaim any other expressed or implied warranties, including implied warranties of merchantability or fitness for a particular use or purpose.

“Cigna” is a registered service mark and the “Tree of Life” logo is a service mark of Cigna Intellectual Property, Inc., licensed for use by Cigna Corporation and its operating subsidiaries. All products and services are provided by or through such operating subsidiaries, including Connecticut General Life Insurance Company and Cigna Health and Life Insurance Company, and not by Cigna Corporation.

Table of Contents

1. INTRODUCTION	5
1.1. SCOPE	5
1.2. OVERVIEW	5
1.3. REFERENCES	5
2. GETTING STARTED	6
2.1. WORKING WITH CIGNA	6
2.1. WORKING WITH CIGNA	6
2.2. TRADING PARTNER REGISTRATION	6
2.3. SYSTEM AVAILABILITY AND DOWNTIME	6
3. TESTING WITH THE PAYER	6
3.1. X12 TRANSACTION AUTHORIZATION TESTS	7
3.2. X12 TRANSACTION ENVELOPE TEST VALIDATION	8
3.3. X12 TRANSACTION EXCEPTION PROCESSING	8
4. CONNECTIVITY WITH THE PAYER / COMMUNICATIONS	9
4.1. SYSTEM AVAILABILITY	9
4.2. PROCESS FLOWS	9
4.2.1. TRADING PARTNER TESTING	9
4.3. COMMUNICATION PROTOCOL SPECIFICATIONS	12
4.4. SECURITY AND AUTHENTICATION REQUIREMENTS	12
5. CONTACT INFORMATION	13
5.1. EDI CUSTOMER SERVICE	13
5.2. EDI TECHNICAL ASSISTANCE	13
5.3. PROVIDER SERVICE NUMBER	13
5.4. APPLICABLE WEBSITES / E-MAIL	13
6. CONTROL SEGMENTS / ENVELOPES	14
6.1. ISA – IEA (278 NOTIFICATION)	14
6.2. GS – GE (278 NOTIFICATION)	16
6.3. ST – SE (278 NOTIFICATION)	17
6.4. ISA – IEA (278 ACKNOWLEDGMENT)	17
6.5. GS – GE (278 ACKNOWLEDGMENT)	18
6.6. ST – SE (278 ACKNOWLEDGMENT)	19
7. PAYER SPECIFIC BUSINESS RULES AND LIMITATIONS	20
7.1. 278 NOTIFICATION	20
7.2. 278 ACKNOWLEDGMENT	20
8. ACKNOWLEDGEMENTS AND OR REPORTS	20
9. TRADING PARTNER AGREEMENTS	20
10. TRANSACTION SPECIFIC INFORMATION (LOOPS)	21
10.1. LOOP N/A (278 NOTIFICATION) – BEGINNING OF HIERARCHICAL TRANSACTION	21
10.2. LOOP 2010A (278 NOTIFICATION) – INFORMATION SOURCE NAME	21
10.3. LOOP 2010B (278 NOTIFICATION) – INFORMATION RECEIVER NAME	21
10.4. LOOP 2010C (278 NOTIFICATION) – SUBSCRIBER NAME	22
10.5. LOOP 2000E (278 NOTIFICATION) – PATIENT EVENT LEVEL	22
10.6. LOOP 2010EA (278 NOTIFICATION) – PATIENT EVENT PROVIDER NAME	23

10.7. LOOP N/A (278 ACKNOWLEDGMENT) – BEGINNING OF HIERARCHICAL TRANSACTION .23
10.8. LOOP N/A (278 ACKNOWLEDGMENT) – AAA ERROR CODES23

11. APPENDICES24

11.1. IMPLEMENTATION CHECKLIST24
11.2. BUSINESS SCENARIO24
11.3. TRANSMISSION EXAMPLE.....24
11.4. TRADING PARTNER SET UP REQUEST FORM.....24
 11.4.1. ROLES AND RESPONSIBILITIES.....24
11.5. CHANGE SUMMARY25

1. INTRODUCTION

1.1. SCOPE

This Companion Guide has been designed to describe to Cigna's trading partners the format and data content of the Health Care Services Review Notification and Acknowledgment 278 transaction in the Electronic Data Interchange (EDI) environment.

NOTE: If the content type is set to 'encoded', the data must also be encoded.

1.2. OVERVIEW

This Companion Guide will replace, in total, any previously issued Cigna Companion Guide for the 278 Health Care Services Review Notification and Acknowledgment transactions. This Companion Guide has been written to assist you in designing and implementing 278 notification and 278 acknowledgment transactions to meet Cigna's processing standards. The Cigna Companion Guide identifies key data elements from the transaction set that we request you provide to us as well as key data elements from the transaction set that Cigna will provide to you. The recommendations made are to enable you to more effectively submit 278 and receive 278 response transactions.

1.3. REFERENCES

This document is a companion to the ASC X12N Implementation Guide (005010X216) Health Care Services Review Notification and Acknowledgment 278.

2. GETTING STARTED

2.1. WORKING WITH CIGNA

2.1 WORKING WITH Cigna

Cigna trading partners must have an active trading partner agreement. If a third-party is selected to perform electronic transactions, additional Trading Partner information may be required for setup. Health care professionals can exchange EDI transactions by directly connecting to the Cigna systems through a clearinghouse.

Direct Connection:

Direct connection to Cigna for the purpose of X12 278 (Version 005010X216) Health Care Services Review transaction submission may be available. This connection type will support real-time submissions and responses. Please contact EDIEscalatedRequests@Cigna.com for setup opportunities.

Clearinghouse:

Health care professionals should contact their current clearinghouse vendor to discuss their clearinghouse's ability to support the X12 278 (Version 005010X216) Health Care Services Review transaction, as well as associated timeframe, costs, etc. Health care professionals that do not already have a clearinghouse vendor can contact one of the Cigna connected clearinghouses. For a list of available clearinghouses, visit www.Cigna.com/edivendors.

If you have additional questions please contact Cigna at this email address:
EDIEscalatedRequests@Cigna.com

2.2. TRADING PARTNER REGISTRATION

All trading partners who wish to exchange Health Care Services Review Notification transactions with Cigna via the ASC X12 278 (Version 005010X216) must complete a questionnaire. Trading Partner responses will provide Cigna with contact information, desired connectivity method, and transaction-specific information. After completion of the online questionnaire, Cigna will work with each Trading Partner to establish connectivity. Upon successful connectivity Cigna will begin system testing with each Trading Partner.

2.3. SYSTEM AVAILABILITY AND DOWNTIME

278 transaction processing is available 24 hours a day, 7 days a week. However, to allow for maintenance, 278 transaction processing may be unavailable on the first and third Sundays of the month from 6:00 p.m. until 10:00 p.m. ET. Interactive 278 transaction processing may be unavailable during this maintenance window, but reasonable efforts will be made to avoid downtime when possible.

3. TESTING WITH THE PAYER

EDI Controls

- Cigna will utilize, when necessary and appropriate, both the TA1 – Interchange Acknowledgement and 999 – Functional Acknowledgement responses.

- Cigna will enforce SNIP level 1-5 compliance edits as per the 278 ASC X12N Implementation Guide (005010X216) for both inbound 278 notifications and outbound 278 acknowledgments with the exceptions noted in section 7 of this document .

X12 Transaction Processing

- X12 transactions will be verified as originating from a Cigna recognized trading partner (authenticated) and checked for access to submit the specific X12 transaction (authorization). Failure of “authorization test” will generate a TA1 and/or 999 response back to the Trading Partner.
- X12 transactions will be checked for proper X12 structure via “envelope test validation”. This ensures the transaction request is complete and formatted properly. Failures of envelope tests can generate TA1 or 999 responses back to the Trading Partner.
- X12 transactions 278 requests will be validated against the X12 278 HIPAA guide for compliance (SNIP Level 1-5) . If an exception occurs, the appropriate 999 response is sent back to the trading partner.
- Special Test Processing: If the ISA15 (Usage Indicator) is set to T (Test Data), then the X12 request ISA10, GS04 and GS05 date and time elements are returned in the X12 response. This allows for regression test tools to validate expected data/time responses in those fields. If the ISA15 (Usage Indicator) is set to P (Production Data), then the data and time fields are populated with the current date and time.

3.1. X12 TRANSACTION AUTHORIZATION TESTS

The following table defines the “authorization tests” to be processed on receipt of each X12 278 Health Care Services Review Notification and Acknowledgment.

The authorization tests run in the order shown. Upon detection of an error, the appropriate TA1 or 999 response is sent. Multiple errors are not processed in the TA1 response since this can lead to faulty error reporting. In the 999 error response multiple errors may be sent with the exception of GS01 and GS08 errors. If both GS01 and GS08 errors are present, only the GS01 error will be sent since only one AK905 segment is allowed.

HIPAA Element	Authorization Tests	TA1 Response	999 Response
		TA105	AK905
N/A	Clearing House source can not be identified	013	N/A
ISA05/ISA06	Unknown clearing house (unknown ISA05/ISA06 combination)	006	N/A
ISA07/ISA08	Unknown Payor (unknown ISA07/ISA08 combination)	008	N/A
ISA14	Acknowledgment Requested	019	N/A
GS01	Unsupported Transaction Set in Group	N/A	1
GS02	Unknown Originator ID value	N/A	1
	Missing Originator ID value	N/A	1
GS03	Unknown Recipient LOB value	N/A	1
	Missing Recipient LOB value	N/A	1
GS08	Unsupported Version of Implementation Guide	N/A	2

3.2. X12 TRANSACTION ENVELOPE TEST VALIDATION

- The following table defines the “envelope tests” to be processed on receipt of each X12 278 request.
- The envelope tests run in the order shown. Upon detection of an error, the appropriate TA1 or 999 response is sent. Multiple errors are not processed since this can lead to faulty error reporting.

HIPAA Element	Envelope Tests	TA1 Response	999 Response	
		TA105	AK905	IK502
IEA Segment	Control Number in IEA02 does not match Control Number in ISA13	001	N/A	N/A
IEA Segment	Functional Group Count in IEA01 does not match actual Functional Groups counted	021	N/A	N/A
GE Segment	Group Control Number in GE02 does not match Group Control Number in GS06	N/A	4	N/A
ST Segments	Transaction Sets Included count in GE01 does not match actual Transaction Sets counted	N/A	5	N/A
ST Segments	Transaction Set Control Number in ST02 does not match Transaction Set Control Number in SE02.	N/A	N/A	3
SE Segment	Number of Included Segments Count in SE01 does not match actual segment count	N/A	N/A	5

3.3. X12 TRANSACTION EXCEPTION PROCESSING

This section will be completed in coordination with Cigna System Testing.

4. CONNECTIVITY WITH THE PAYER / COMMUNICATIONS

4.1. SYSTEM AVAILABILITY

278 transaction processing is available 24 hours a day, 7 days a week. However, to allow for maintenance, 278 transaction processing may be unavailable on the first and third Sundays of the month from 6:00 p.m. until 10:00 p.m. ET. Interactive 278 transaction processing may be unavailable during this maintenance window, but reasonable efforts will be made to avoid downtime when possible.

4.2. PROCESS FLOWS

To submit EDI transactions, Cigna trading partners must have an active trading partner agreement. If a third-party has been elected to perform electronic transactions, additional Trading Partner information may be required for setup.

All trading partners who wish to exchange Health Care Services Review Notification transactions with Cigna via the ASC X12 278 (Version 005010X216) must complete a questionnaire. Trading Partner responses will provide Cigna with contact information, desired connectivity method, and transaction-specific information. After completion of the online questionnaire, Cigna will work with each Trading Partner to establish connectivity. Upon successful connectivity Cigna will begin system testing with each Trading Partner.

Trading partners should submit transactions according to current guidelines. Any questions regarding transmission must be submitted to Cigna EDI Customer Service.

Cigna offers two protocols for securely submitting interactive (real-time) transactions to the Cigna Gateway. These methods include:

- Secure Web Services (SOAP using HTTP or HTTPS via internet, MIME using HTTP with LDAP Auth, CignaFORM using HTTP with IP Auth)
- REST web service, with Two factor authentication (Certificate based mutual auth and User Id/Pswd) or using B2B VPN tunnel

After establishing a transmission method, each trading partner must successfully complete testing. Information on this phase is provided in the next section of this companion guide.

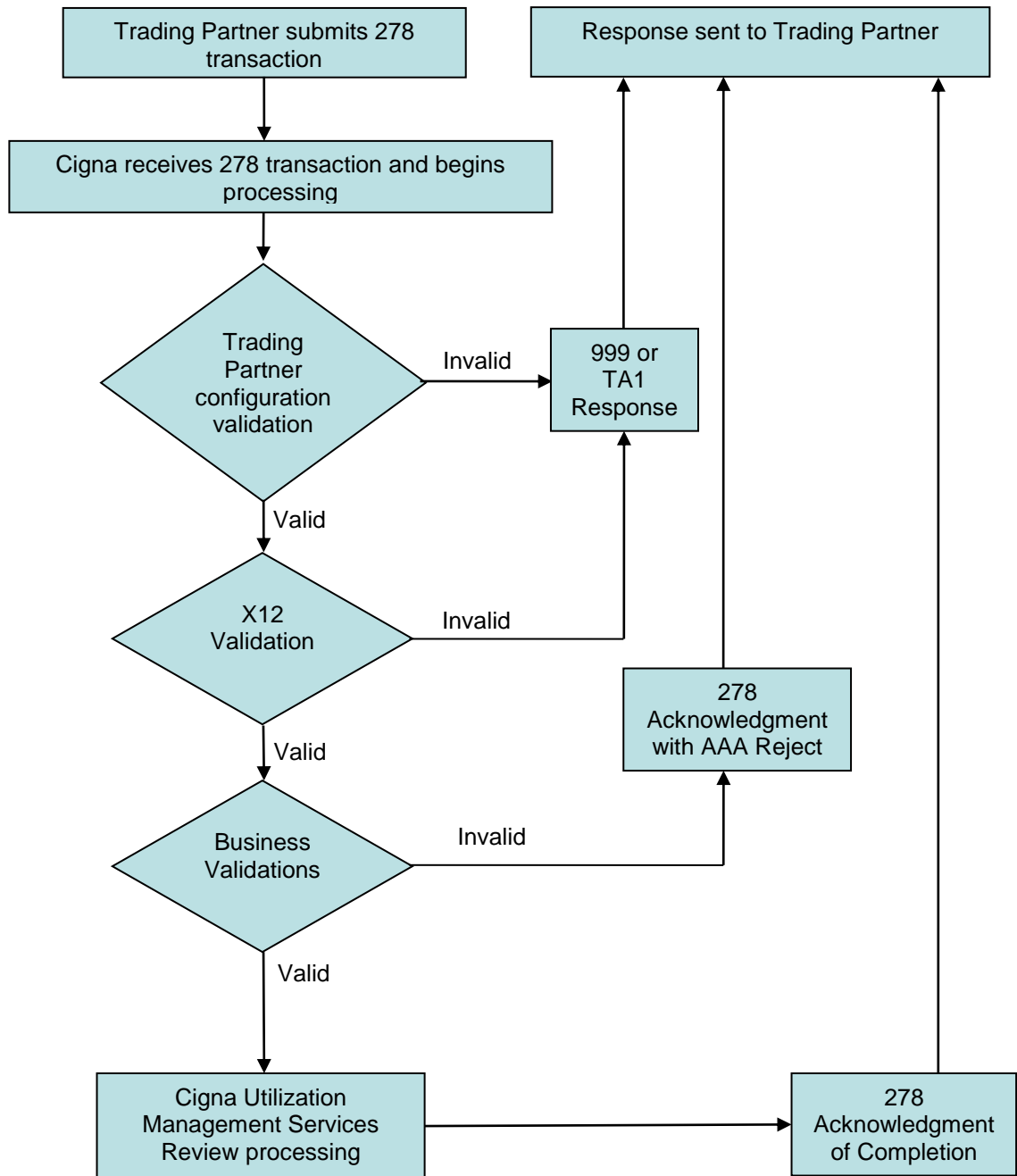
4.2.1. TRADING PARTNER TESTING

Before submitting or receiving production files, each trading partner should test to ensure HIPAA compliance. Cigna will enforce SNIP level 1-5 compliance edits as per the 278 ASC X12N Implementation Guide (005010X216) for both inbound 278 notifications and outbound 278 acknowledgements.

First, trading partners should test by uploading inbound X12 278 transactions/files to the self-service Cigna HIPAA validation Tool. The tool analyzes the data and generates reports listing any validation errors encountered. Once transactions/files successfully pass the Cigna HIPAA validation Tool, trading partners should download sample X12 278 response transactions/files from the self-service Cigna HIPAA validation Tool and process them in their system to ensure that the transaction/file processes as expected.

Next, trading partners should test by submitting inbound X12 files and receiving validation from Cigna that the data in the file processes as expected. Trading partner testing includes HIPAA compliance testing as well as validating the use of conditional, optional, and mutually defined components of the transaction.

Real-Time Submission Flow



RE-TRANSMISSION PROCEDURE

Real-time:

4.3. COMMUNICATION PROTOCOL SPECIFICATIONS

Cigna offers two protocols for securely submitting interactive (real-time) transactions to the Cigna Gateway. These methods include:

- Secure Web Services (SOAP using HTTP or HTTPS via internet, MIME using HTTP with LDAP Auth, CignaFORM using HTTP with IP Auth)
- REST web service, with Two factor authentication (Certificate based mutual auth and User Id/Pswd) or using B2B VPN tunnel

4.4. Security and Authentication Requirements

For security and authentication information refer to section 11 below.

5. CONTACT INFORMATION

5.1. EDI CUSTOMER SERVICE

Most questions can be answered by referencing this Companion Guide. If you have additional questions related to Cigna's Health Care Services Review transaction, contact the Claim Intake Team for reporting of 5010 status/issues:

EDIEscalatedRequests@Cigna.com

5.2. EDI TECHNICAL ASSISTANCE

For technical questions related to Cigna's 278 transaction, contact the Customer Support Center at 1.800.810.3388

5.3. PROVIDER SERVICE NUMBER

Contracting, Provider Service and Credentialing questions, contact 1.800.88Cigna (882.4462).

5.4. APPLICABLE WEBSITES / E-MAIL

For information about Cigna policies, coverage positions and claim edits access the secure provider website at www.cignaforhcp.com. Registration is required.

6. CONTROL SEGMENTS / ENVELOPES

6.1. ISA – IEA (278 NOTIFICATION)

This section describes the use of the Interchange Control segments, ISA and IEA. These segments mark the beginning and ending of an interchange. The ISA segment has a fixed length and all the elements within this segment must be populated. This segment includes a description of the expected sender and receiver codes and delimiters. The first element delimiter in the ISA segment is an Asterisk (*) which will be used as the delimiter throughout the transaction. The final character in the ISA segment is a Tilde (~) will be used as the delimiter for each segment in the transaction.

Segment ID	Element ID	Name	Code	Definition of Code / Notes
ISA		Interchange Control Header Segment		
	ISA01	Authorization Information Qualifier	'00'	No Authorization Information Present
	ISA02	Authorization Information	<Authorization Information>	Authorization Information
	ISA03	Security Information Qualifier	'00'	No Security Information Present
	ISA04	Security Information	10 'spaces'	No Security Information Note: Value should always be 'spaces'
	ISA05	Interchange ID Qualifier of Sender	'01' '14' '20' '27' '28' '29' '30' '33' 'ZZ'	01 Duns (Dun & Bradstreet) 14 Duns Plus Suffix 20 Health Industry Number (HIN) CODE SOURCE 121: Health Industry Number 27 Carrier Identification Number as assigned by Health Care Financing Administration (HCFA) 28 Fiscal Intermediary Identification Number as assigned by Health Care Financing Administration (HCFA) 29 Medicare Provider and Supplier Identification Number as assigned by Health Care Financing Administration (HCFA) 30 U.S. Federal Tax Identification Number 33 National Association of Insurance Commissioners Company Code (NAIC) ZZ Mutually Defined
	ISA06	Interchange Sender ID	ID will be provided at time of set up with Gateway	Interchange Sender ID for Trading Partner
	ISA07	Interchange ID Qualifier of Receiver	'01' '14' '20' '27' '28' '29' '30' '33' 'ZZ'	01 Duns (Dun & Bradstreet) 14 Duns Plus Suffix 20 Health Industry Number (HIN) CODE SOURCE 121: Health Industry Number 27 Carrier Identification Number as assigned by Health Care Financing Administration (HCFA) 28 Fiscal Intermediary Identification Number as assigned by Health Care Financing Administration (HCFA) 29 Medicare Provider and Supplier Identification Number as assigned by Health Care Financing Administration (HCFA)

				30 U.S. Federal Tax Identification Number 33 National Association of Insurance Commissioners Company Code (NAIC) ZZ Mutually Defined
	ISA08	Interchange Receiver ID	ID will be provided at time of set up with Gateway	Interchange Receiver ID for Cigna
	ISA09	Interchange Date	Format: YYMMDD	Date of the interchange Cigna uses the value submitted in ISA09 on the 278 request.
	ISA10	Interchange Time	Format: HHMM	Time of the interchange Cigna uses the value submitted in ISA10 on the 278 request.
	ISA11	Repetition Separator	'^'	Repetition Separator is a delimiter used to separate repeated occurrences of simple data element or composite data structure
	ISA12	Interchange Control Version Number	'00501'	Health Care Services Review – Notification and Acknowledgment Implementation Guide published May 2006.
	ISA13	Interchange Control Number	<Interchange Control Number>	Control Number used by the interchange sender; must be identical to the associated Interchange Trailer IEA02
	ISA14	Acknowledgment Requested	'0' '1'	0: No Acknowledgement Requested 1: Acknowledgement Requested Cigna uses '0' (No Acknowledgment Requested)
	ISA15	Usage Indicator; Code to indicate whether data enclosed by this interchange envelope is test or production information	'T' 'P'	'T': Test data Note: Date and Time fields in ISA09, ISA10, GS04 and GS05 are returned in the X12 response. 'P': Production Data Note: Date and time fields are populated with current date and time.
	ISA16	Component Element Separator	:	Component element separator is a delimiter and not a data element
IEA		Interchange Control Trailer Segment		
	IEA01	Number of Included Functional Groups	<Number of Included Functional Groups>	Cigna Functional Group count
	IEA02	Interchange Control Number	<Interchange Control Number>	Cigna Interchange Control Number

6.2. GS – GE (278 NOTIFICATION)

This section describes the Functional Group Control segments, GS and GE. These segments identify the application sender and receiver codes. The GS Control Segment indicates the beginning of a Functional Group and the GE Control Segment indicates the ending of a Functional Group. These control segments describe how Cigna expects a Trading Partner to send functional groups and how Cigna will send functional groups back to the Clearinghouse.

Segment ID	Element ID	Name	Code	Definition of Code / Notes
GS		Functional Group Header		
	GS01	Functional Identifier Code	'HI'	Health Care Services Review Information (278) The Version/Release/Industry Identifier Code and the applicable Functional Identifier Code must be transmitted in the Functional Group Header (GS segment) that begins a functional group of these transaction sets.
	GS02	Application Sender's Code	<Sender Code>	Code identifying party sending transmission; codes agreed to by trading partners.
	GS03	Application Receiver's Code	ID will be provided at time of set up with Gateway	Code identifying party receiving transmission.
	GS04	Date	Format: CCYYMMDD	Date of functional group creation
	GS05	Time	Format: HHMM	Creation time Cigna uses the value submitted in GS05 on the 278 request.
	GS06	Group Control Number	<Group Control Number>	Assigned number originated by sender; Control Number must be equal same data element in Group Trailer, GE02.
	GS07	Responsible Agency Code	'X'	Accredited Standards Committee X12. Value should always be 'X'.
	GS08	Version / Release / Industry Identifier Code	'005010X216'	Health Care Services Review – Notification and Acknowledgment Implementation Guide published May 2006.
GE		Functional Group Trailer		
	GE01	Number of Transaction Sets Included	<Number of Transaction Sets Included>	Number of transactions included
	GE02	Group Control Number	<Group Control Number>	Group Control Number must be identical to same data element in functional group header, GS06.

6.3. ST – SE (278 NOTIFICATION)

This section indicates the beginning and the ending of a transaction set and provides the count of the transmitted segments including the beginning (ST) and ending (SE) segments. These segments also provide a Transaction Set Control Number which must be identical in each segment.

Segment ID	Element ID	Name	Code	Definition of Code / Notes
ST		Transaction Set Header		
	ST01	Transaction Set Identifier Code	'278'	Health Care Services Review Information
	ST02	Transaction Set Control Number	<Transaction Set Control Number>	Transaction Set Control Number assigned by sending party.
	ST03	Implementation Convention Reference	'005010X216'	Health Care Services Review – Notification and Acknowledgment Implementation Guide published May 2006.
SE		Transaction Set Trailer		
	SE01	Transaction Segment Count	<Total Segments>	Total number of segments included in a transaction set including ST and SE segments
	SE02	Transaction Set Control Number	<Transaction Set Control Number>	Transaction Set Control Number assigned by sending party.

6.4. ISA – IEA (278 ACKNOWLEDGMENT)

This section describes the use of the Interchange Control segments, ISA and IEA. These segments mark the beginning and ending of an interchange. The ISA segment has a fixed length and all the elements within this segment must be populated. This segment includes a description of the expected sender and receiver codes and delimiters. The first element delimiter in the ISA segment is an Asterisk (*) which will be used as the delimiter throughout the transaction. The final character in the ISA segment is a Tilde (~) will be used as the delimiter for each segment in the transaction.

Segment ID	Element ID	Name	Code	Definition of Code / Notes
ISA		Interchange Control Header Segment		
	ISA01	Authorization Information Qualifier	'00'	No Authorization Information Present
	ISA02	Authorization Information	10 'spaces'	No Authorization Information
	ISA03	Security Information Qualifier	'00'	No Security Information Present
	ISA04	Security Information	10 'spaces'	No Security Information Note: Value should always be 'spaces'
	ISA05	Interchange ID Qualifier of Sender	'30'	U.S. Federal Tax Identification Number
	ISA06	Interchange Sender ID	'06-1059331'	Interchange Sender ID for Cigna
	ISA07	Interchange ID Qualifier of Receiver	'ZZ'	Mutually defined
	ISA08	Interchange Receiver ID	<Receiver ID>	Interchange Receiver ID for Clearinghouse
	ISA09	Interchange Date	Format: YYMMDD	Date of the interchange
	ISA10	Interchange Time	Format: HHMM	Time of the interchange

	ISA11	Interchange Control Standards Identifier	“^”	U.S. EDI Community of ASC X12, TDCC and UCS
	ISA12	Interchange Control Version Number	‘00501’	Health Care Services Review – Request for Review and Response Implementation Guide published May 2006.
	ISA13	Interchange Control Number	‘000000001’	Cigna Functional Group count default
	ISA14	Acknowledgment Requested	‘0’	0: No Acknowledgement Requested
	ISA15	Usage Indicator; Code to indicate whether data enclosed by this interchange envelope is test or production information	‘T’ ‘P’	‘T’: Test data Note: Date and Time fields in ISA09, ISA10, GS04 and GS05 are returned in the X12 response. ‘P’: Production Data Note: Date and time fields are populated with current date and time.
	ISA16	Component Element Separator	:	Component element separator is a delimiter and not a data element
IEA		Interchange Control Trailer Segment		
	IEA01	Functional Group Count	‘1’	Functional Group count
	IEA02	Interchange Control Number	<Interchange Control Number>	Interchange Control Number

6.5. GS – GE (278 ACKNOWLEDGMENT)

This section describes the Functional Group Control segments, GS and GE. These segments identify the application sender and receiver codes. The GS Control Segment indicates the beginning of a Functional Group and the GE Control Segment indicates the ending of a Functional Group. These control segments describe how Cigna expects a Trading Partner to send functional groups and how Cigna will send functional groups back to the Clearinghouse.

Segment ID	Element ID	Name	Code	Definition of Code / Notes
GS		Functional Group Header		
	GS01	Functional Identifier Code	‘HI’	Health Care Services Review Information (278) The Version/Release/Industry Identifier Code and the applicable Functional Identifier Code must be transmitted in the Functional Group Header (GS segment) that begins a functional group of these transaction sets.
	GS02	Application Sender’s Code	ID will be provided at time of set up with Gateway	Code identifying party sending transmission. Established during Trading Partner setup.
	GS03	Application Receiver’s Code	ID will be provided at time of set up with Gateway	Code identifying party receiving transmission. Established during Trading Partner setup.
	GS04	Date	Format: CCYYMMDD	Date of functional group creation
	GS05	Time	Format: HHMM	Creation time
	GS06	Group Control Number	<Group Control Number>	Assigned number originated by sender; Control Number must be equal same data element in Group Trailer, GE02.
	GS07	Responsible Agency Code	‘X’	Accredited Standards Committee X12. Value should always be ‘X’.

	GS08	Version / Release / Industry Identifier Code	'005010X216'	Health Care Services Review – Notification and Acknowledgment Implementation Guide published May 2006.
GE		Functional Group Trailer		
	GE01	Number of Transaction Sets Included	<Number of Transaction Sets Included>	Number of transactions included
	GE02	Group Control Number	<Group Control Number>	Group Control Number must be identical to same data element in functional group header, GS06.

6.6. ST – SE (278 ACKNOWLEDGMENT)

This section indicates the beginning and the ending of a transaction set and provides the count of the transmitted segments including the beginning (ST) and ending (SE) segments. These segments also provide a Transaction Set Control Number which must be identical in each segment.

Segment ID	Element ID	Name	Code	Definition of Code / Notes
ST		Transaction Set Header		
	ST01	Transaction Set Identifier Code	'278'	Health Care Services Response Information
	ST02	Transaction Set Control Number	<Transaction Set Control Number>	Transaction Set Control Number assigned by sending party.
	ST03	Implementation Convention Reference	'005010X216'	Health Care Services Review – Notification and Acknowledgment Implementation Guide published May 2006.
SE		Transaction Set Trailer		
	SE01	Transaction Segment Count	<Total Segments>	Total number of segments included in a transaction set including ST and SE segments
	SE02	Transaction Set Control Number	<Transaction Set Control Number>	Transaction Set Control Number assigned by sending party.

7. PAYER SPECIFIC BUSINESS RULES AND LIMITATIONS

7.1. 278 NOTIFICATION

- Cigna currently will only accept Inpatient discharge notifications (UM01=AR).
- Submission of Previous Review Authorization Number (REF*BB) and/or Administrative Reference (REF*NT) is required.
- Discharge date (DTP=096) is required along with a corresponding Discharge Status within the message segment (MSG01). Discharge status codes are detailed within section 10.5 below.
- The message segment (MSG) should be formatted as MSG*DS=XXXX
- Each discharge notification must identify at minimum the admitting/servicing facility within the 2010EA Loop.

7.2. 278 ACKNOWLEDGMENT

- Cigna will return applicable industry standard information on the Health Care Service Review Information- Acknowledgement at the requestor, subscriber, dependent, event and service levels.
- A successful receipt of a discharge notification will contain a BHT02 value of 53.
- An unsuccessful receipt of a discharge notification will contain a BHT02 value of 44 and a corresponding AAA segment detailing the reason for rejection.
- Duplicate requests will be responded to with HCR01=NA and HCR03=0Q (Duplicate Request)

8. ACKNOWLEDGEMENTS AND OR REPORTS

- Cigna will generate the TA1/999 acknowledgement for an X12 Real Time transaction to indicate HIPAA/translation errors, otherwise, the associated 278 response is returned.

9. TRADING PARTNER AGREEMENTS

Trading Partner Agreements for existing Partners are currently on file with will be utilized where appropriate. For new Trading Partners please contact: EDIEscalatedRequests@Cigna.com

10. TRANSACTION SPECIFIC INFORMATION (LOOPS)

A Transaction Loop is a group of related segments. Cigna specific values are required for the elements which comprise the segments for the 278 Transaction Loops. The following section identifies these loops, their segments and their required element values:

10.1. LOOP N/A (278 NOTIFICATION) – BEGINNING OF HIERARCHICAL TRANSACTION

Loop	Segment	Element	Name	Code(s)	Definition of Code/Cigna Usage
N/A	BHT	BHT02	Transaction Set Purpose Code	'CN'	Only CN (Completion Notification) is supported

10.2. LOOP 2010A (278 NOTIFICATION) – INFORMATION SOURCE NAME

Loop	Segment	Element	Name	Code	Definition of Code
2010A	NM1	NM103	Requester Last or Organization Name	NA	NA
2010A	NM1	NM104	Requester First Name	NA	Required when NM103 is present and NM102=1.
2010A	NM1	NM105	Requester Middle Name	NA	Required when NM104 is present and the middle name/initial of the person is known.
2010A	N3	N301	Requester Address	NA	To assist with provider matching, please provide the address, including City, State and Zip code
2010A	N4	N401, N402, N403	Requester City, State, Zip Code	NA	

10.3. LOOP 2010B (278 NOTIFICATION) – INFORMATION RECEIVER NAME

Loop	Segment	Element	Name	Code	Definition of Code/Cigna Usage
2010B	NM1	NM103	Name Last or Organization Name	'Cigna HealthCare' "Intracorp"	Utilization Management Organization (UMO) Last or Organization Name
2010B	NM1	NM108	Identification Code Qualifier	'46'	46 : Identification Code Qualifier
2010B	NM1	NM109	Identification Code	'06-1059331'	Identification Code for Cigna

10.4. LOOP 2010C (278 NOTIFICATION) – SUBSCRIBER NAME

Loop	Segment	Element	Name	Code	Definition of Code
2010C	NM1	NM108	Identification Code Qualifier	'MI'	MI: Member Identification Number Identifies a Cigna specific unique member identifier rather than the Social Security Number (SSN). If a unique member identifier exists, it will be used as the primary identification code on all 278s, in place of the member's SSN. Once this unique member identifier is provided to the information receiver, this identifier should be used for all future inquiries, communications and claim submissions.

10.5. LOOP 2000E (278 NOTIFICATION) – PATIENT EVENT LEVEL

Loop	Segment	Element	Name	Code(s)	Definition of Code/Cigna Usage
2000E	UM	UM01	Request Category Code	'AR '	AR : Admission Review (Inpatient Admissions)
2000E	REF	REF01	Previous Review Authorization Number	'BB'	One or both of the REF segments is required when submitting a discharge notification
2000E	REF	REF01	Previous Review Administrative Reference Number	'NT'	
2000E	DTP	DTP01	Date Time Qualifier	'096'	Discharge date is required for a discharge notification
2000E	MSG	MSG01	Free-form Message Test	'DS=XXXX'	<p>Discharge Status is required to be submitted for all discharge notifications. Please provide one of the below discharge status codes in the message segment. The format of the message segment should be MSG*DS=XXXX~</p> <p>Discharge Status Codes ACHP - Acute Hospital BHDX - Behavioral Detox BHIP - Behavioral Inpatient BHIO - Behavioral Intensive Outpatient BHOP - Behavioral Outpatient BHPH - Behavioral Partial Hospitalization RESI - Behavioral Residential EXPR - Expired HOME - Home HSHM - Hospice Home HSIP - Hospice Inpatient JALX - Jail LAMA - Left Against Medical Advice/Elopement LTAF - Long Term Acute Care Facility REHC - Rehab Care SNFX - Skilled Nursing Facility UNKN - Unknown</p>

10.6. LOOP 2010EA (278 NOTIFICATION) – PATIENT EVENT PROVIDER NAME

Loop	Segment	Element	Name	Code(s)	Definition of Code/Cigna Usage
2010EA	NM1	NM101	Entity Identifier	'FA'	When UM01=AR a Facility 'FA' is required
2010EA	NM1	NM103	Requester Last or Organization Name	NA	NA
2010EA	NM1	NM104	Requester First Name	NA	Required when NM103 is present and NM102=1.
2010EA	NM1	NM105	Requester Middle Name	NA	Required when NM104 is present and the middle name/initial of the person is known.
2010EA	N3	N301	Requester Address	NA	To assist with provider matching, please provide the address, including City, State and Zip code
2010EA	N4	N401, N402, N403	Requester City, State, Zip Code	NA	

10.7. LOOP N/A (278 ACKNOWLEDGMENT) – BEGINNING OF HIERARCHICAL TRANSACTION

Loop	Segment	Element	Name	Code(s)	Definition of Code
N/A	BHT	BHT06	Transaction Type Code	'44' '53'	44: Rejection 53: Completion

10.8. LOOP N/A (278 ACKNOWLEDGMENT) – AAA Error Codes

Loop	AAA01	AAA03	AAA04	Error Description
2000A	N	41	N	Purpose Code (BHT02) is not supported.
2000A	Y	42	P	System not available, please resubmit original transaction.
2010C	Y	67	C	Subscriber not found please correct and resubmit
2010D	Y	67	C	Dependent not found please correct and resubmit
2000E	N	15	C	Request Category Code (UM01) is not supported. Please correct and resubmit.
2000E	N	AN	C	Invalid/Missing Discharge Date. Please correct and resubmit.
2000E	N	T5	C	Previous Review Authorization Number is missing or invalid. Please correct and resubmit.

2000E	N	T5	C	Administrative Reference Number is missing or invalid. Please correct and resubmit.
2000E	N	15	C	Invalid/missing discharge reason (MSG01). Please correct and resubmit.
2000E	N	33	C	Previous Review Authorization Number or Administrative Reference Number not on file.
2000E	N	33	N	Different discharge date already on file.
2000E	N	33	N	Authorization on file is in an invalid state.
2010E	N	15	C	Invalid/missing Provider Information.

11. APPENDICES

11.1. IMPLEMENTATION CHECKLIST

Once you have acquired your active ID and password, please sign on and test connectivity.

11.2. BUSINESS SCENARIO

Business Scenarios for 278 is currently under construction.

11.3. TRANSMISSION EXAMPLE

Transmission Example for the 278 is currently under construction.

11.4. TRADING PARTNER SET UP REQUEST FORM

Trading partners who have an active trading partner agreement are given IDs, passwords, and a URL to access the Cigna Technical Assessment Tool. Trading Partners will complete a minimum of three technical assessments to provide Cigna with their contact information, desired connectivity method, and transaction-specific information.

Trading partners should submit transactions according to current guidelines. Any questions regarding transmission must be submitted to Cigna EDI Customer Service.

11.4.1. ROLES AND RESPONSIBILITIES

Trading Partner:

- Provide Cigna with accurate contact information.
- Complete the Technical assessments. This information will be used to set the trading partner up in the system.
- Coordinate testing with Cigna for the communication option selected.

CIGNA:

- The Cigna Trading Partner Management team will contact your trading partner regarding any connectivity set-up/testing.
- Trading Partner communications of actual production date.
- Install changes based upon the pre-established Cigna production release procedures.

Cigna Business Area/Application Technical Support:

- Completion of data testing as needed.

11.5. CHANGE SUMMARY

This section describes the differences between the current Companion Guide and previous guide(s).

Date	Version	Description	Author
09/15/2020	1.0	Initial Version	Ted Rendahl, Karen Roberg